







# D.C. UNITED™ STADIUM



## SECTION

# 06

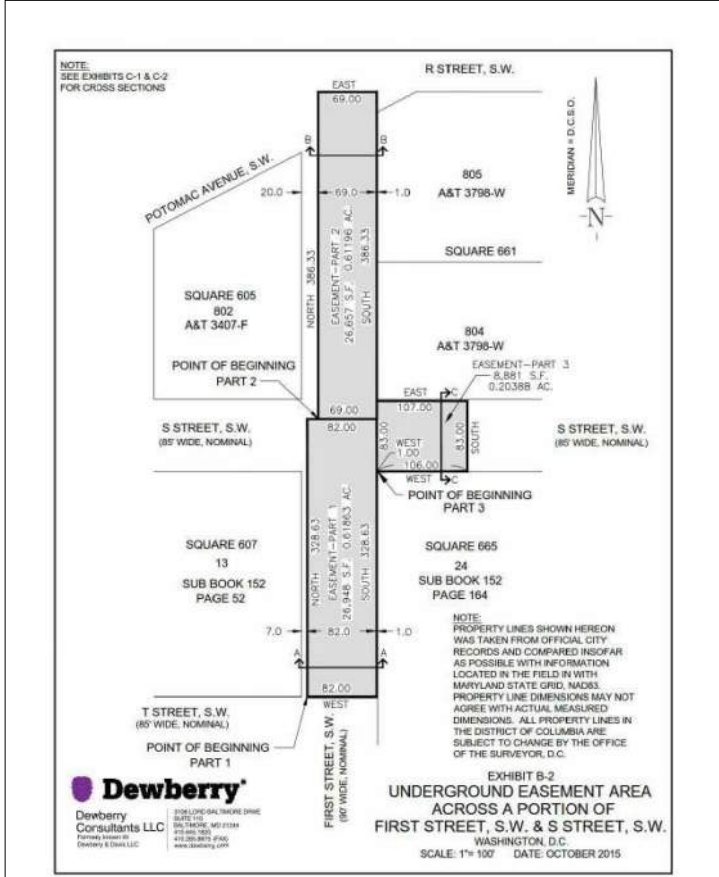
CIVIL DRAWINGS

HARDSCAPE/  
LANDSCAPE  
DRAWINGS

- 6.01 CIVIL - SITE BOUNDARY & EASEMENT PLAN
- 6.02 CIVIL - EXISTING CONDITIONS PLAN
- 6.03 CIVIL - INITIAL EROSION AND SEDIMENT CONTROL PLAN
- 6.04 CIVIL - ROUGH GRADING PLAN
- 6.05 CIVIL - ROUGH GRADING EROSION CONTROL PLAN
- 6.06 CIVIL - EROSION AND SEDIMENT CONTROL NOTES
- 6.07 CIVIL - VEGETATIVE STABILIZATION AND SPECIFICATIONS
- 6.08 CIVIL - EROSION AND SEDIMENT CONTROL DETAILS
- 6.09 CIVIL - EROSION AND SEDIMENT CONTROL DETAILS
- 6.10 CIVIL - UTILITY PLAN
  
- 6.12 LANDSCAPE / HARDSCAPE PLAN
- 6.13 ENLARGED PLAZA LANDSCAPE / HARDSCAPE PLAN
- 6.14 PLAZA SITE SECTIONS AND DETAILS
- 6.15 PLAZA RENDERING
- 6.16 1ST STREET LOOKING NORTH RENDERING
- 6.17 ENLARGED NORTH PLAZA & 1ST STREET LANDSCAPE /  
HARDSCAPE PLANS
- 6.18 NORTH PLAZA RENDERING
- 6.19 NORTH PLAZA SITE SECTIONS AND DETAILS
- 6.20 SITE SECTIONS

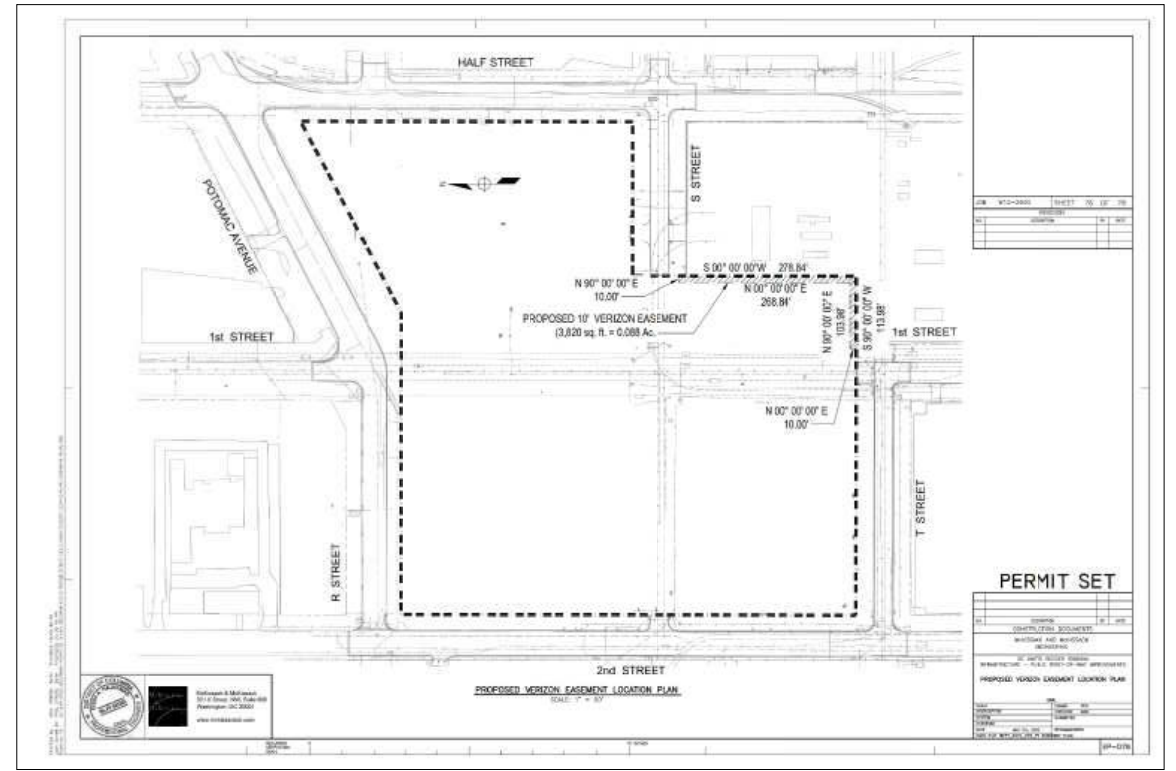
ABBREVIATIONS		ABBREVIATIONS:	
ABAN	ABANDONED	LV	LONG LEG VERTICAL
AFT	ABOVE FINISH FLOOR	LP	LOW POINT OR LIGHT POLE
AGP	AT GRADE INLET PROTECTION	LR	LONG RADIUS
ALUM	ALUMINUM	LVS	LOWER VERTICAL BEND
APPROX	APPROXIMATE	MAH	MAXIMUM
ASTM	AMERICAN SOCIETY FOR TESTING AND MATERIALS	MB	MANHOLE
BT	BITUMINOUS	MD	METAL DECK
BL	BASELINE	MG	MEET GRADE
BF	BLIND FLANGE	MJ	MECHANICAL JOINT
BLDG	BUILDING	MO	MECHANICAL OPENING
BYF	BUTTERFLY VALVE	MONT	MONUMENT
DB	BACK OF WALK	MF	MANUFACTURER
CJ	CONSTRUCTION JOINT	MH	MANHOLE
CL	CENTERLINE	MS	MISCELLANEOUS
C&C	CURB AND CUTTER	NA	NEUTRAL AXIS
CB	CATCH BASIN	N	NORTH
CG	CHARGE OF GRADE	NIC	NOT IN CONTRACT
CI	CLEARANCE	ND	NUMBER
CLF	CHAIN LINK FENCE	NOM	NOMINAL
CMU	CONCRETE MASONRY UNIT	NS	NON-SHOWN
CO	CLEAN CUT	N/A	NOT APPLICABLE
COL	COLUMN	OC	ON CENTER
COMM	COMMUNICATIONS	OD	OUTSIDE DIAMETER
CONC	CONCRETE	PC	POINT OF SURVEY
CONT	CONTINUOUS	POC	PORTLAND CEMENT
CRES	CHEMICAL RECEIVING STATION	PCCP	PRESTRESSED CONCRETE CYLINDER PIPE
CW	CITY WATER	PCFJ	PRECOMPRESSED JOINT FILLER
C/C	CENTER TO CENTER	PE	PLAIN END
D	DRAIN	PGL	PROFILE GRADE LINE
DB	DUCT BANK	PI	POINT OF INTERSECTION
DI	DROP INLET	PJF	PERFORMED JOINT FILLER
DI	DUCTILE IRON PIPE	L	PLATE
DI (Ø)	DIAMETER	PM	PROCESS MANHOLE
DN	DOWN	PO	POINT ON CURVE
DRN	PROCESS DRAIN	POI	POINT ON TAKEOFF
DV	DIVERTER VALVE	PROP	PROPOSED
DRW	DRAIN, WASTE, AND VENT	PRV	PRESSURE RELIEF VALVE
E	EAST	PV	PLUG VALVE
EA	EACH	PVC	POLYVINYL CHLORIDE
EF	EACH FACE	R	RADIUS
EJ	EXPANSION JOINT	RCF	REINFORCED CONCRETE PIPE
ELEC	ELECTRIC	RD	ROOF DRAIN
ELEV OR EL	ELEVATION	RED	REDUCER
EMH	ELECTRIC MAN-HOLE	REF	REQUIRED
ETC	ETCETERA	REQ'D	REQUIRED
ETR	EXISTING TO REMAIN	RPI	POINT OF TANGENCY
EW	EACH WAY	RR	RAILROAD
EXIST	EXISTING	RFP	RIP-RAP INFLOW PROTECTION
EXP	EXPANSION	RT	RIGHT
FCA	FLANGED COUPLING ADAPTER	S	SOUTH
FD	FLOOR DRAIN	SAW	SANITARY SEWER
FE	FIRE EXTINGUISHER	SOH	SCHEDULE
FF	FIRST FLOOR	SOE	STABILIZED CONSTRUCTION ENTRANCE
FH	FIRE HYDRANT	SD	STORM DRAIN
FLG	FLANGE	SMH	SANITARY SEWER MANHOLE
FLR	FLOOR	SSF	SUPER SLT FENCE
FM	FORCE MAIN	SLV	SHORT LEG VERTICAL
FT	FELT	SQ	SQUARE
GAU	GALVANIZED	SS	STAINLESS STEEL
GPS	GALVANIZED RIGID STEEL	ST	STORM SEWER
GND	GROUND	STVH	STORM SEWER MANHOLE
GPR	GROUND PENETRATING RADAR	STA	STATION
GSP	GALVANIZED STEEL PIPE	TR	TRAILS
HB	HOSE BIBB	TOC	TOP OF CASTING
HDR	HORIZONTAL	TOG	TOP OF GRATING
HP	HIGH POINT	TOS (T/S)	TOP OF STEEL
HSB	HIGH STRENGTH (BOLT)	TSOS	OR TOP OF SLAB
ID	INSIDE DIAMETER	TSOS	TEMPORARY STONE OUTLET STRUCTURE
IN	INCH	TYE	TYPICAL
INS	INSERTION	UNO	UNLESS NOTED OTHERWISE
INVT	INVERT	UVS	UPPER VERTICAL BEND
LB	LEAD	VNE	VARIABLE
		VC	VERTICAL
		VER	VARIABLE FREQUENCY DRIVE
		VFD	VARIABLE FREQUENCY DRIVE
		VSD	VARIABLE SPEED DRIVE
		WC	WATER CLOSET
		W	WEST
		W/	WITH
		WL	WATER LEVEL
		WMH	WATER MANHOLE
		WSEL	WATER SURFACE ELEVATION
		WVF	WELDED WIRE FABRIC
		YH	YARD HYDRANT

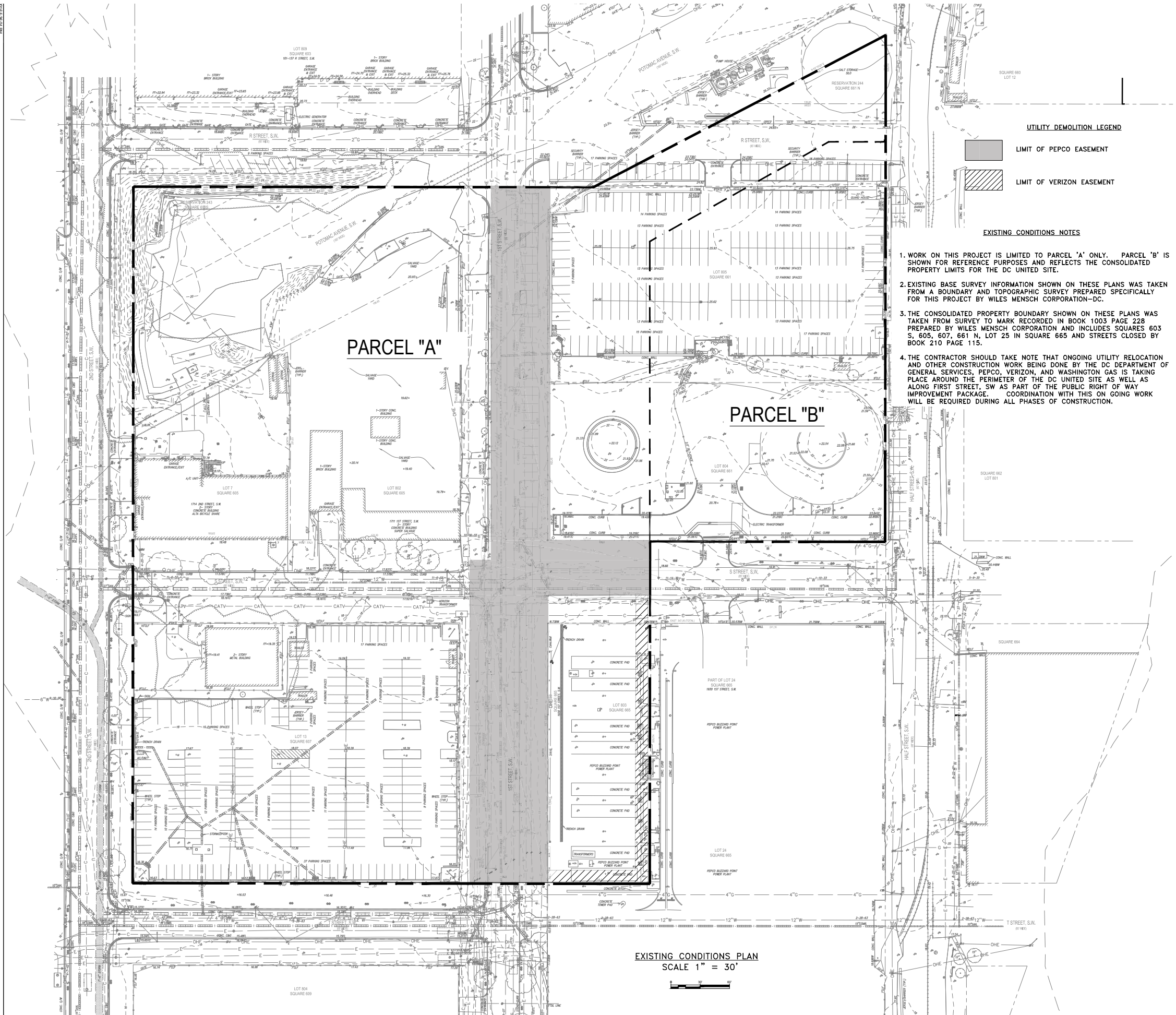
SYMBOLS		
DESCRIPTION	EXISTING	MODIFIED
HIGH-MAST LIGHT POLE	N/A	(Symbol)
LIGHT POLE	(Symbol)	(Symbol)
CONTOUR	(Symbol)	(Symbol)
SIGN	(Symbol)	(Symbol)
SPOT ELEVATION	X 15.00	X 15.30
SURVEY MONUMENT	(Symbol)	(Symbol)
MANHOLE	(Symbol)	(Symbol)
ELECTRICAL MANHOLE	(Symbol)	(Symbol)
COMMUNICATIONS MANHOLE	(Symbol)	(Symbol)
CITY WATER VALVE CASING	(Symbol)	(Symbol)
STORM SEWER MANHOLE	(Symbol)	(Symbol)
SANITARY SEWER MANHOLE	(Symbol)	(Symbol)
CATCH BASIN	(Symbol)	(Symbol)
UTILITY POLE	(Symbol)	N/A
UTILITY GAP	(Symbol)	(Symbol)
CURB & CUTTER	(Symbol)	(Symbol)
CHAIN LINK FENCE	(Symbol)	(Symbol)
DARTS/CLUSTERS OR ALUM QUADRANT AS NOTED	(Symbol)	(Symbol)
W BEAM GUIDERAIL	(Symbol)	(Symbol)
CITY WATER	(Symbol)	(Symbol)
ROOF DRAIN PIPE	(Symbol)	(Symbol)
STORM SEWER PIPE	(Symbol)	(Symbol)
SANITARY SEWER PIPE	(Symbol)	(Symbol)
ELEC/COMM DUCTBANK	(Symbol)	(Symbol)
PLANT PROCESS LINE	(Symbol)	(Symbol)
CHEMICAL LINE	(Symbol)	(Symbol)
ASPHALTIC CONCRETE PAVEMENT SECTION	(Symbol)	(Symbol)
TREE	(Symbol)	(Symbol)
SOIL SECTION	(Symbol)	(Symbol)
FIRE DEPT. CONNECTION	(Symbol)	(Symbol)
FIRE HYDRANT	(Symbol)	(Symbol)
HARD HYDRANT	(Symbol)	(Symbol)
EDGE OF WATER	(Symbol)	(Symbol)
RAILROAD TRACKS	(Symbol)	(Symbol)
REMOVE (DEMOLISH)	(Symbol)	(Symbol)
SIDE WAY TRAFFIC TRAFFIC FLOW	(Symbol)	(Symbol)
HORIZONTAL TO VERTICAL	(Symbol)	(Symbol)
POST	(Symbol)	(Symbol)
SATELLITE DISH	(Symbol)	(Symbol)
UNIDENTIFIED OBJECT	(Symbol)	(Symbol)



- SURVEY NOTES**
- EXISTING BASE SURVEY INFORMATION SHOWN ON THESE PLANS WAS TAKEN FROM A BOUNDARY AND TOPOGRAPHIC SURVEY PREPARED SPECIFICALLY FOR THIS PROJECT BY WILES MENSCH CORPORATION-DC WITH THE LAST DATE OF FIELD SURVEY BEING JANUARY 12, 2016.
  - THE CONSOLIDATED PROPERTY BOUNDARY SHOWN ON THESE PLANS WAS TAKEN FROM SURVEY TO MARK RECORDED IN BOOK 1003 PAGE 228 PREPARED BY WILES MENSCH CORPORATION AND INCLUDES SQUARES 603 S, 605, 607, 661 N, LOT 25 IN SQUARE 665 AND STREETS CLOSED BY BOOK 210 PAGE 115.
  - ELEVATIONS SHOWN ARE REFERENCED TO DCDPW DATUM (BM 12-7 & 12-11). MERIDIAN REFERENCED TO DCSO NORTH BY HOLDING 2ND STREET, SW AS N-S.
  - VISIBLE ABOVE GROUND UTILITIES WERE SHOWN ON THE SURVEY. SUBSURFACE UTILITIES, WHERE SHOWN, FOLLOW ASCE 38-02 QUALITY LEVELS A-D. A: VISUALLY VERIFIED VIA TEST HOLES; B: DESIGNATED AND SURVEYED; C: RECORD INFORMATION CORRELATED WITH SURVEYED SURFACE FEATURES; D: RECORD INFORMATION ONLY. WHERE SUBSURFACE UTILITIES HAVE BEEN APPARENTLY DESIGNATED BY OTHERS ON SITE, THOSE UTILITY LOCATIONS HAVE BEEN SHOWN AS QUALITY LEVEL C. OTHER UTILITIES MAY EXIST THAT ARE NOT SHOWN ON THE SURVEY. UNLESS OTHERWISE NOTED ABOVE, UTILITIES SHOWN ON THE SURVEY REPRESENT QUALITY LEVEL C.
  - THE PROPERTY IS IDENTIFIED AS ZONE X - AREAS DETERMINED TO BE OUTSIDE THE 0.2% ANNUAL CHANCE OF FLOODING AS IDENTIFIED ON FLOOD INSURANCE RATE MAP (FIRM) COMMUNITY PANEL 11000100 57C, EFFECTIVE DATE SEPTEMBER 27, 2010.

- VOLUNTARY CLEANUP ACTION PLAN NOTES**
- THE CONTRACTOR SHALL TAKE NOTE THAT CONTAMINATED SOIL AND OTHER MATERIALS EXIST ONSITE THAT MUST BE REMOVED IN ACCORDANCE WITH THE DOE APPROVED VOLUNTARY CLEANUP ACTION PLAN (VCAP) AND HUMAN HEALTH RISK ASSESSMENT (HRRS) FOR THE DC UNITED PROJECT SITE. THESE DOCUMENTS ARE AVAILABLE FROM THE CONSTRUCTION MANAGER AND DESCRIBE THE EXCAVATION PROCEDURES RELATED TO THE SOIL REMEDIATION.
  - FUGITIVE DUST CONTROL DURING DEMOLITION AND EXCAVATION OPERATIONS IS ALSO REQUIRED UNDER THE REQUIREMENT OF THE VCAP AND HRRS. A SEPARATE SPECIFICATION IS AVAILABLE FROM THE CONSTRUCTION MANAGER THAT DESCRIBES THE REQUIREMENTS FOR FUGITIVE DUST CONTROL ON THE PROJECT.





**UTILITY DEMOLITION LEGEND**

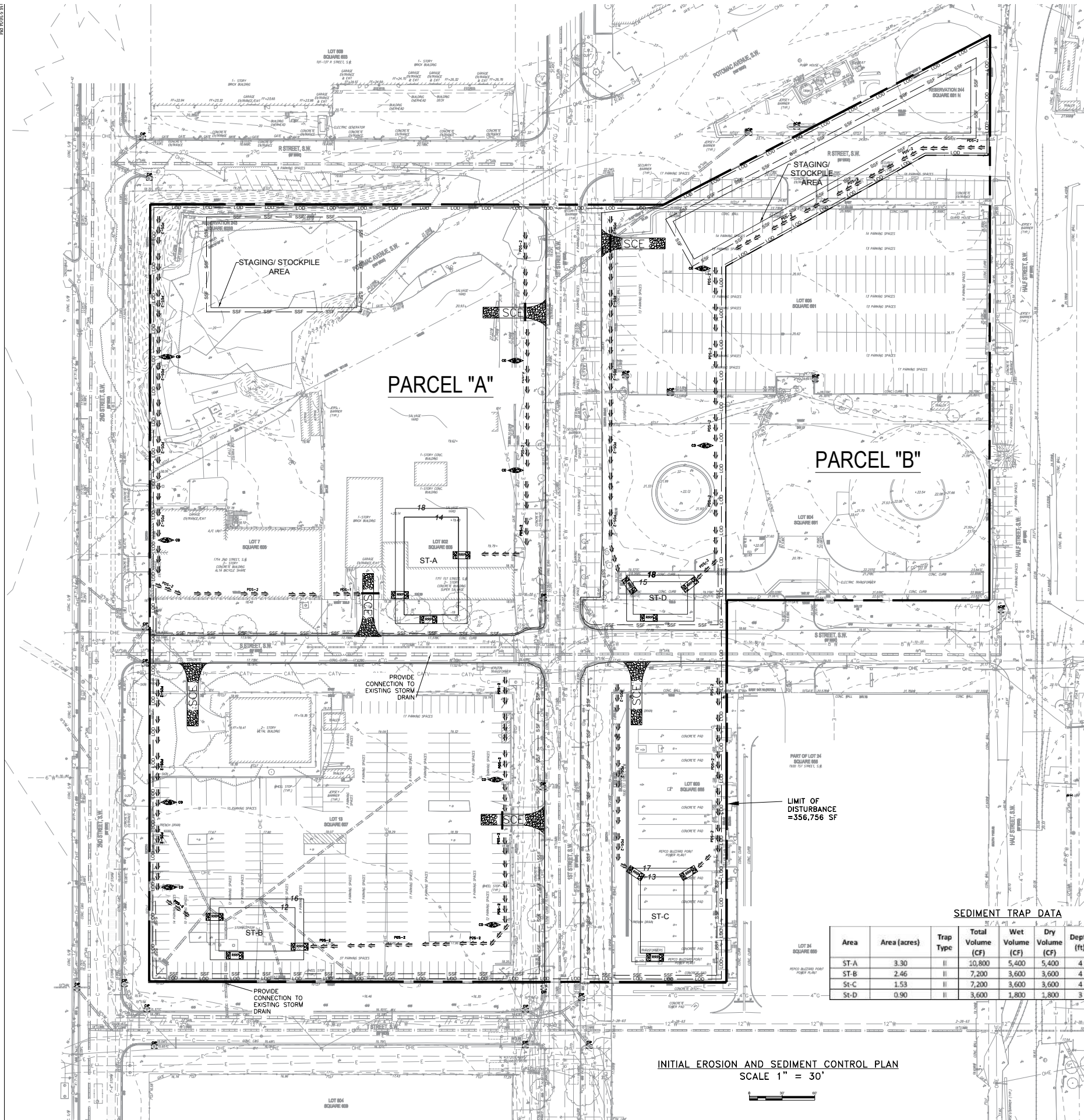
- LIMIT OF PEPCO EASEMENT
- LIMIT OF VERIZON EASEMENT

**EXISTING CONDITIONS NOTES**

1. WORK ON THIS PROJECT IS LIMITED TO PARCEL 'A' ONLY. PARCEL 'B' IS SHOWN FOR REFERENCE PURPOSES AND REFLECTS THE CONSOLIDATED PROPERTY LIMITS FOR THE DC UNITED SITE.
2. EXISTING BASE SURVEY INFORMATION SHOWN ON THESE PLANS WAS TAKEN FROM A BOUNDARY AND TOPOGRAPHIC SURVEY PREPARED SPECIFICALLY FOR THIS PROJECT BY WILES MENSCH CORPORATION-DC.
3. THE CONSOLIDATED PROPERTY BOUNDARY SHOWN ON THESE PLANS WAS TAKEN FROM SURVEY TO MARK RECORDED IN BOOK 1003 PAGE 228 PREPARED BY WILES MENSCH CORPORATION AND INCLUDES SQUARES 603 S, 605, 607, 661 N, LOT 25 IN SQUARE 665 AND STREETS CLOSED BY BOOK 210 PAGE 115.
4. THE CONTRACTOR SHOULD TAKE NOTE THAT ONGOING UTILITY RELOCATION AND OTHER CONSTRUCTION WORK BEING DONE BY THE DC DEPARTMENT OF GENERAL SERVICES, PEPCO, VERIZON, AND WASHINGTON GAS IS TAKING PLACE AROUND THE PERIMETER OF THE DC UNITED SITE AS WELL AS ALONG FIRST STREET, SW AS PART OF THE PUBLIC RIGHT OF WAY IMPROVEMENT PACKAGE. COORDINATION WITH THIS ON GOING WORK WILL BE REQUIRED DURING ALL PHASES OF CONSTRUCTION.

**EXISTING CONDITIONS PLAN**  
SCALE 1" = 30'





**EROSION AND SEDIMENT CONTROL LEGEND**

SUPER SILT FENCE	SSF
PERIMETER DIKE/SWALE	PD-1
LIMIT OF DISTURBANCE (LOD)	LOD
STABILIZED CONSTRUCTION ENTRANCE	SC-1
RIPRAP OUTLET SEDIMENT TRAP	ST-1
RIPRAP INFLOW PROTECTION	RIP-1
CURB INLET PROTECTION	CIP
AT GRADE INLET PROTECTION	AGIP
STONE CHECK DAM	SCD
TEMPORARY STONE OUTLET STRUCTURE	TSOS

- EROSION AND SEDIMENT CONTROL SEQUENCE OF CONSTRUCTION FOR DEMOLITION AND EXCAVATION PACKAGE WORK**
1. NOTIFY THE DISTRICT DEPARTMENT OF ENVIRONMENT (DOEE) TO HOLD A PRE-CONSTRUCTION MEETING AT (202) 536-2977. NOTIFY DOEE AT LEAST 72 HOURS BEFORE COMMENCING ANY LAND DISTURBING ACTIVITY.
  2. INSTALL ALL EROSION CONTROL DEVICES IN ACCORDANCE WITH THE APPROVED PLAN. NOTIFY THE DOEE SEDIMENT CONTROL INSPECTOR AND OBTAIN APPROVAL BEFORE PROCEEDING FURTHER.
  3. INSTALL SECURITY FENCING AROUND THE PERIMETER OF THE STADIUM SITE. INSTALL SAFETY FENCING AROUND THE PERIMETER OF ALL OPEN EXCAVATION AREAS.
  4. COORDINATE ALL DEMOLITION AND EXCAVATION WORK WITH THE REQUIREMENTS OF THE VOLUNTARY CLEANUP ACTION PLAN.
  5. REMOVE ALL EXISTING PAVEMENT AND BASE EXCEPT FOR S STREET SW AND FIRST STREET SW. THESE AREAS ARE TO REMAIN IN PLAC FOR AS LONG AS POSSIBLE TO CREATE A WORKING PLATFORM.
  6. REMOVE SLABS ON-GRADE AND BELOW GRADE FOUNDATION RELATED TO FORMER BUILDING STRUCTURES. REMOVE EXISTING UTILITY LINES AND OTHER SITE FEATURES AS INDICATED.
  7. COORDINATE UTILITY REMOVAL WORK WITH THE WORK BEING DONE AROUND THE PERIMETER OF THE SITE WITH THE VARIOUS PUBLIC REALM PLAN CONSTRUCTION CONTRACTORS.
  8. AT THE END OF DEMOLITION AND EXCAVATION OPERATIONS STABILIZE ALL AREAS PRIOR TO THE START OF FOOTING TO GRADE WORK WHICH IS PART OF ANOTHER PERMIT PACKAGE.

**SEDIMENT TRAP DATA**

Area	Area (acres)	Trap Type	Total Volume (CF)	Wet Volume (CF)	Dry Volume (CF)	Depth (ft)	Length (ft)	Width (ft)	Elevation at Bottom	Elevation at Rim	Remarks
ST-A	3.30	II	10,800	5,400	5,400	4	90	50	18	14	Stone Riprap Outlet
ST-B	2.46	II	7,200	3,600	3,600	4	70	40	16	12	Stone Riprap Outlet
ST-C	1.53	II	7,200	3,600	3,600	4	70	40	17	13	Stone Riprap Outlet
ST-D	0.90	II	3,600	1,800	1,800	3	50	30	18	15	Stone Riprap Outlet

**INITIAL EROSION AND SEDIMENT CONTROL PLAN**  
SCALE 1" = 30'